



23RD POPULATION HEALTH COLLOQUIUM

Health Equity and the Impact of Youth Opioid Interventions in South Florida

September 20, 2023



François Sainfort, PhD, FACHE
Professor and Chair, Management
Huizenga College of Business & Entrepreneurship
Professor, Population Health
KC Patel College of Allopathic Medicine
Nova Southeastern University

Who Are We?

Dr. Kiran C. Patel College
of Allopathic Medicine
NOVA SOUTHEASTERN UNIVERSITY

NSU
Florida



- One of the newest fully accredited Medical Schools in the US
- Ambitious vision and plans in competitive market
 - Upper quartile R2 with R1 aspirations within 5 years
 - Aggressive investment strategies
- Highly diverse and focused on population health
- Committed to address health disparities in South Florida and beyond

Broward County ➡ South Florida ➡ Florida

Health Equity in Florida

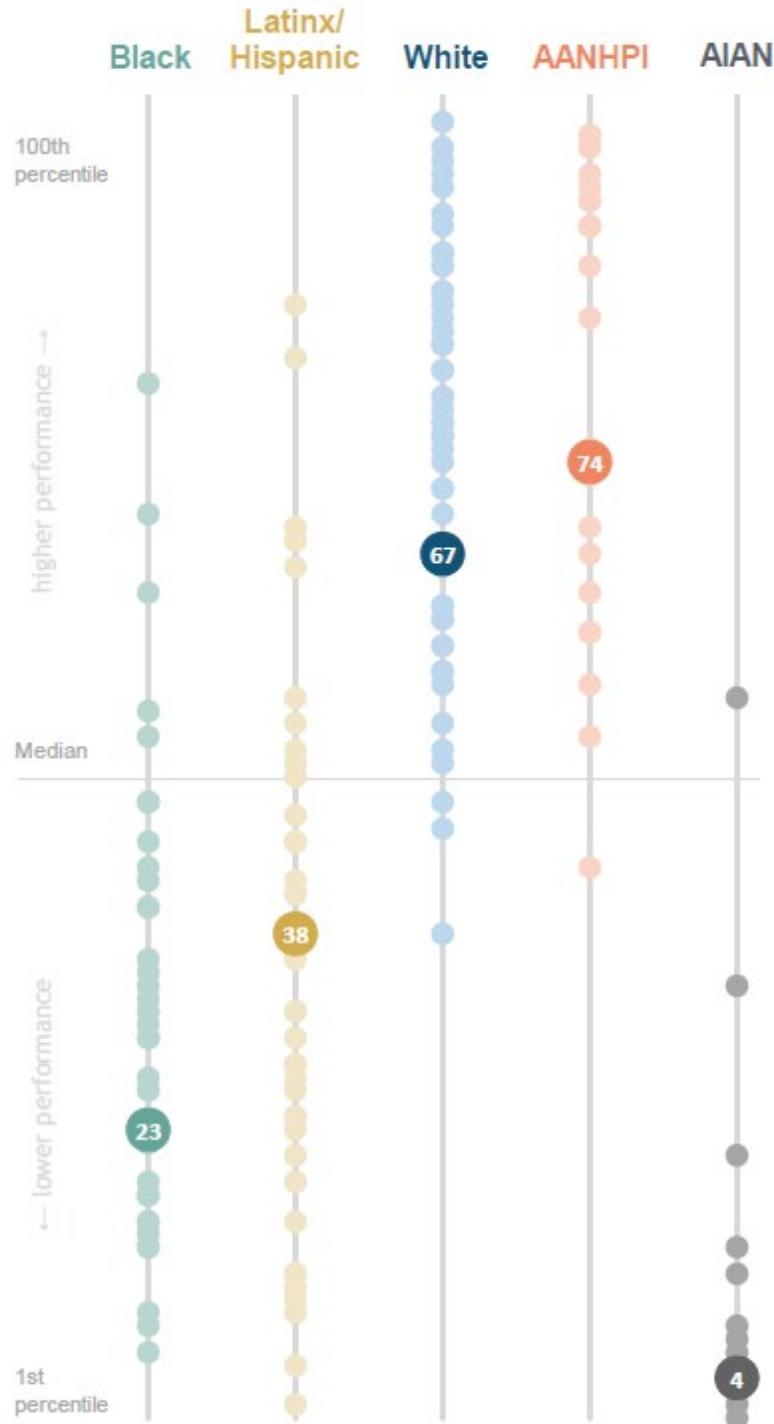
State population

Total	21,159,836	
AANHPI	591,713	3%
AIAN	40,895	<1%
Black	3,175,122	15%
Latinx/Hispanic	5,615,386	27%
White	11,219,594	53%

Source: David C. Radley et al., *Achieving Racial and Ethnic Equity in U.S. Health Care: A Scorecard of State Performance* (Commonwealth Fund, Nov. 2021).

Commonwealth Fund State Equity Scorecard

We have a lot of work to do, both in increasing overall performance and addressing health inequities!



Black

Rank of Black people in FL compared to all states

Overall	24 of 38 states
Health Outcomes	12 of 38
Health Care Access	35 of 40
Health Care Quality	24 of 40

Latinx/Hispanic

Rank of Latinx people in FL compared to all states

Overall	19 of 42 states
Health Outcomes	15 of 42
Health Care Access	17 of 48
Health Care Quality	27 of 48

White

Rank of white people in FL compared to all states

Overall	34 of 51 states
Health Outcomes	33 of 51
Health Care Access	44 of 51
Health Care Quality	34 of 51

Asian American, Native Hawaiian, Pacific Islander (AANHPI)

Rank of AANHPI people in FL compared to all states

Overall	13 of 23 states
Health Outcomes	16 of 24
Health Care Access	13 of 30
Health Care Quality	21 of 41

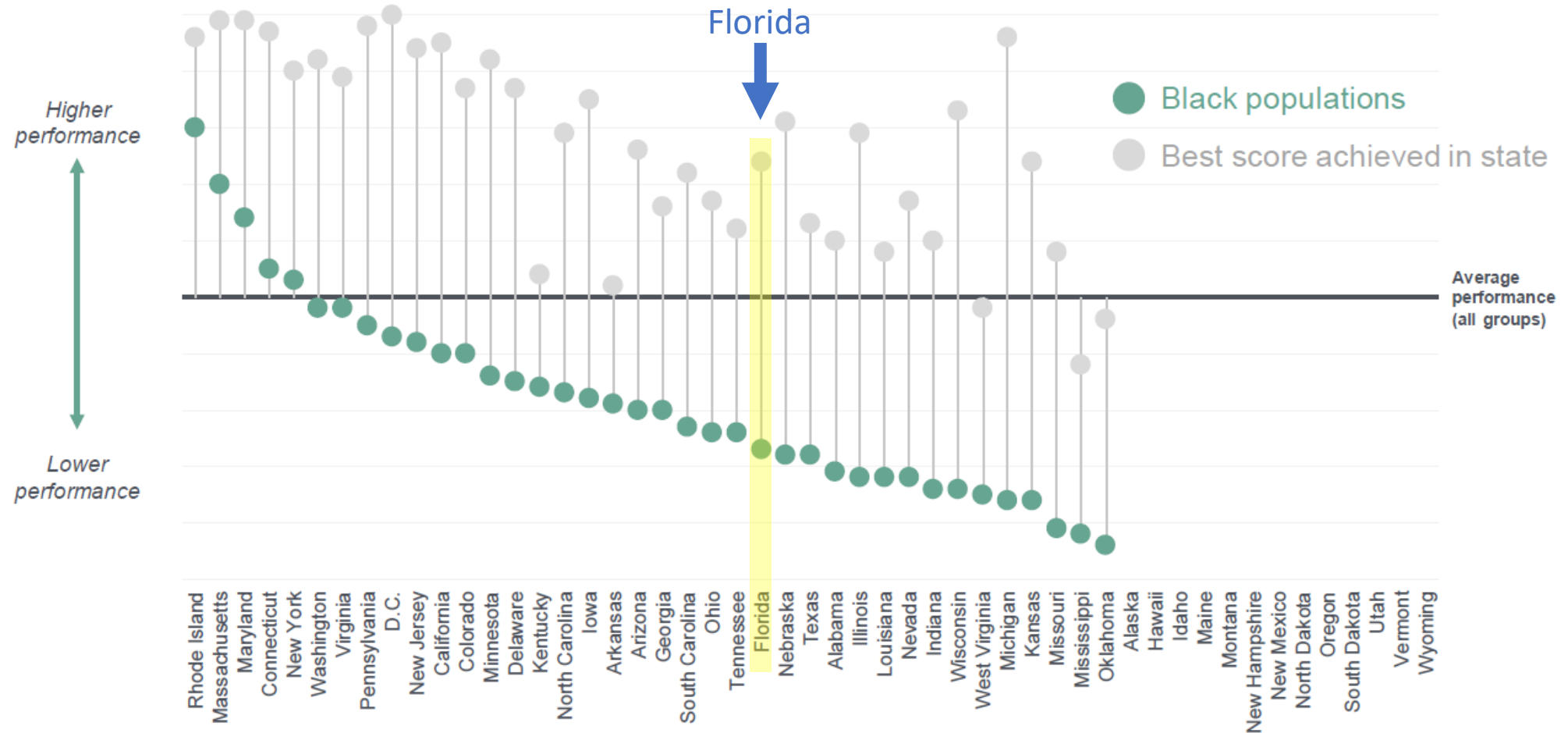
American Indian, Alaska Native (AIAN)

Rank of AIAN people in FL compared to all states

Overall	10 of 14 states
Health Outcomes	3 of 14
Health Care Access	12 of 16
Health Care Quality	16 of 16

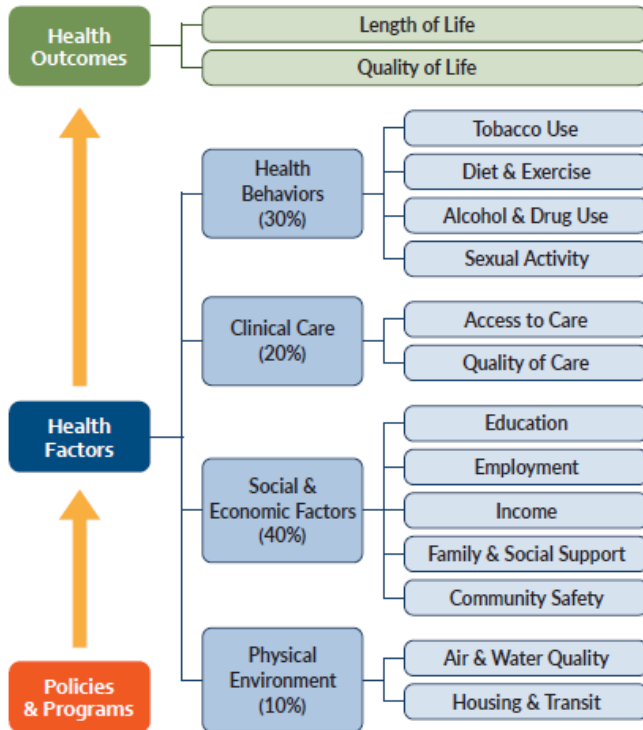
Overall Performance for Black Population

Health system performance among Black people is below average in most states and much worse than the best achieved in all states.

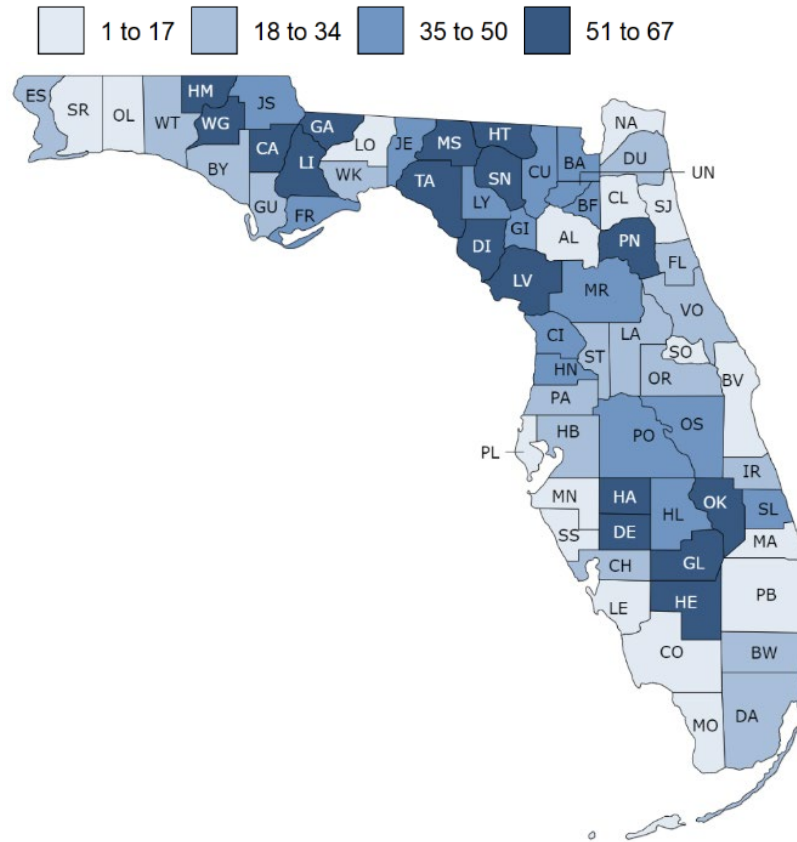


2023 County Health Rankings & Roadmaps

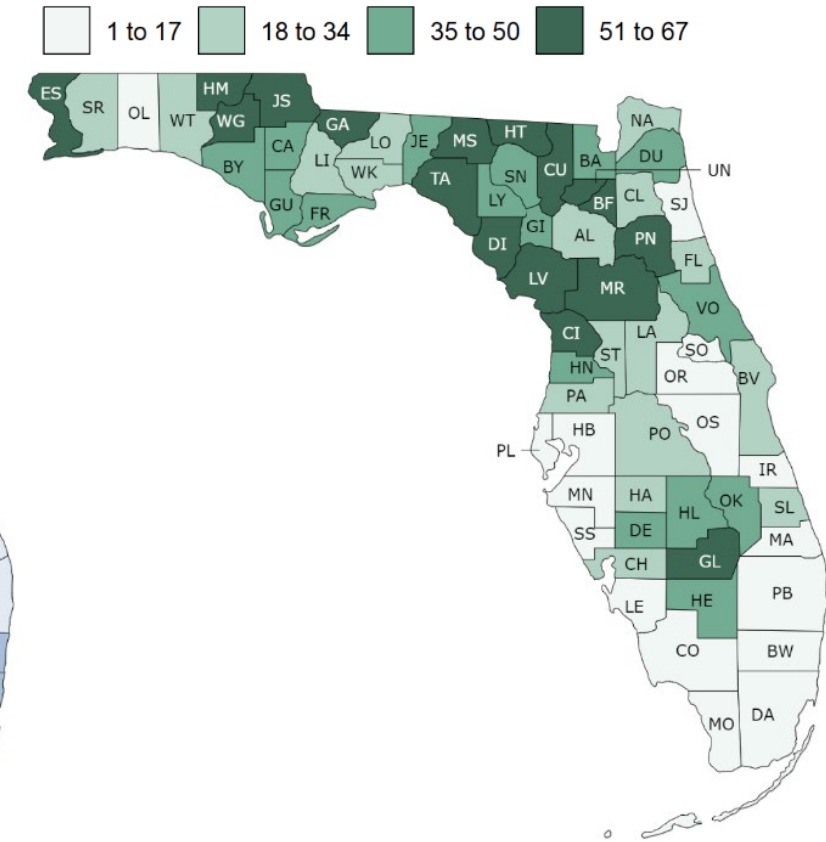
Wide disparities within Florida across counties



Health Factor Ranks

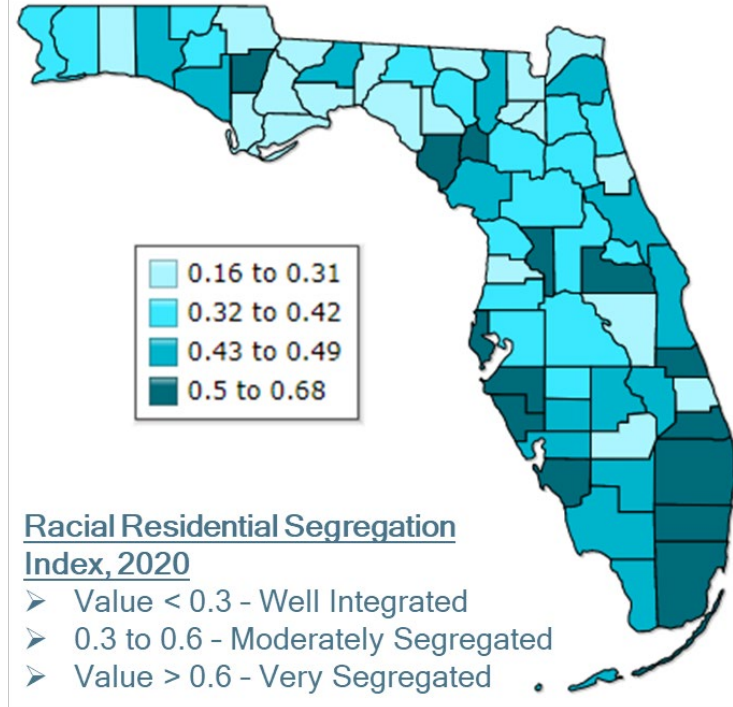
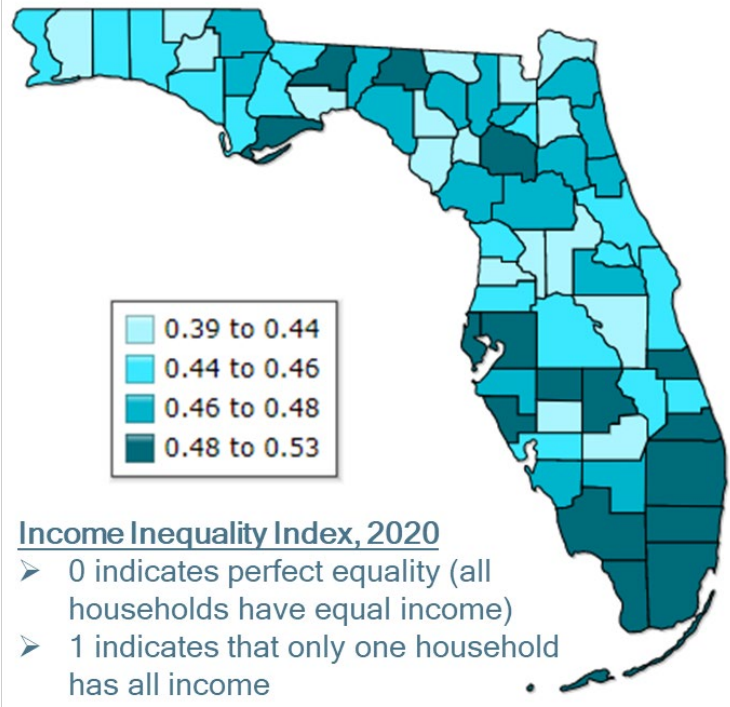


Health Outcome Ranks



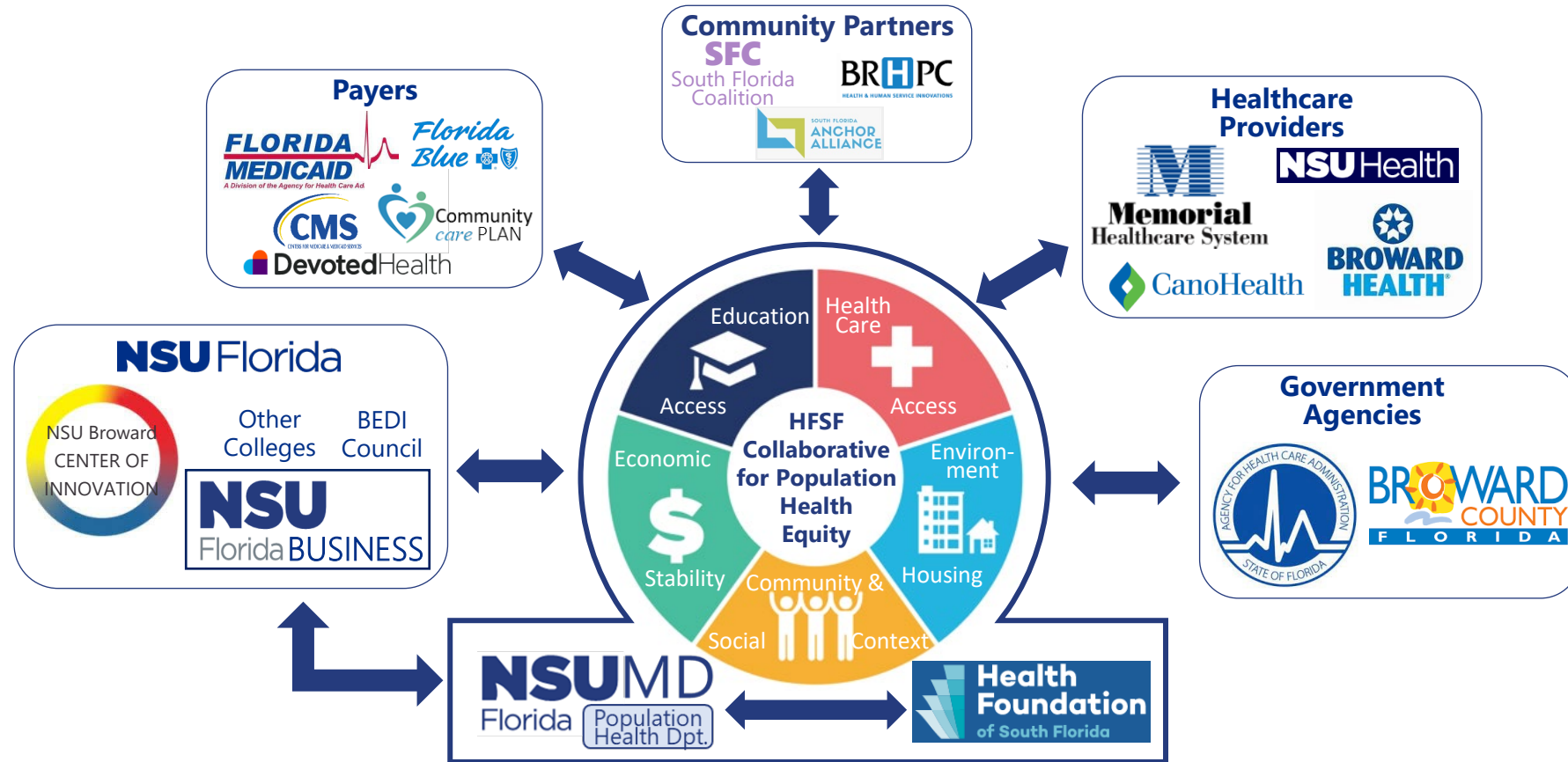
Source: <https://www.countyhealthrankings.org/>

Lots of Work to Do...



High Fragmentation

↗ Overall Performance and ↘ Inequities



PATHWell – Partnership Advancing Equitable Access To Health and Wellbeing

PATHWELL Objectives

- Engage and partner with communities in South Florida to address health inequities, with a focus on vulnerable, marginalized, disadvantaged populations
- Develop, deliver, and evaluate community-based interventions that reduce health disparities
- Educate and train students, scholars and practitioners to mitigate health inequities
- Advance changes in clinical and community practice
- Inform policy



Current Initiatives

- Comprehensive Health Equity Index and risk scores (with all partners)
 - Integrate community, clinical, and individual data across multiple data sources
 - Collected over comprehensive SDOH and clinical data on 368,000 patients
 - Next: apply data sciences methods, geospatial and predictive analytics
- Black maternal health (with provider partners)
- Food insecurity (with community and provider partners)
- Opioid and substance abuse prevention (with payer and community partners)
 - Reach and educate disadvantaged and marginalized at-risk youth ages 11-18

FLORIDA BLUE NSU MD YOUTH OPIOID INITIATIVE

Funded by *Florida Blue* 
Foundation

OUR COMMUNITY PARTNERS:

- Big Brothers Big Sisters
- Take Stock in Children

Miami-
Dade



- Take Stock In Children
- The Urban League
- Pace Center for Girls
- SunServe

Broward



- Take Stock In Children

Palm
Beach



- Round Table St. Lucie County
- Boys and Girls Club
- Children's Advocacy Center

St. Lucie
County



YOUTH SERVED

BASED ON STUDIED RISK
FACTORS THE FLORIDA
BLUE NSU MD YOUTH
OPIOID INITIATIVE SERVES
AT RISK YOUTH AGES 11-
18

Risk Factors

Challenging home dynamics (single parent household, incarcerated family member, family mental illness, undocumented status)

Mental health concerns (anxiety, depression, lacking coping mechanisms, lack of stimulus, trauma, history of sexual/physical abuse)

Family member that uses substances

Access to substances through neighborhood/peers

South Florida factors (large transient population, lack of transportation, music festivals & nightlife culture)

Monetary concerns (low-income)

LGBTQ specific (transgender, coming to Florida for acceptance w/o support net)

Seeking acceptance/wanting to fit in with peers

Human trafficking

WIDE RANGE OF TOPICS

DELIVERED BOTH VIRTUALLY AND IN-PERSON

Modules (8)	Topics
Neurobiology of Addiction	<ul style="list-style-type: none"> • Brain reward pathway • Biological and social determinants of addiction • Drug withdrawal and relapse
Alcohol	<ul style="list-style-type: none"> • Epidemiology • Social and binge drinking • Short/long-term physiologic effects
Nicotine & THC	<ul style="list-style-type: none"> • Smoking, tobacco, E-cigarettes/ vaping • Marijuana, hashish
Stimulants	<ul style="list-style-type: none"> • Cocaine, methamphetamine, Adderall • Designer drugs
Opioids	<ul style="list-style-type: none"> • Heroin & Fentanyl • Prescription (codeine, oxycodone, hydrocodone, etc.)
Improving Social & Emotional Learning	<ul style="list-style-type: none"> • Self-control & Emotional awareness • Communication • Bullying and social problem-solving
Improving Academic & Social Competence	<ul style="list-style-type: none"> • Study habits and academic support • Peer relationships, self-efficacy and assertiveness • Peer pressure and drug resistance skills
Perspectives	<ul style="list-style-type: none"> • Reinforcement of antidrug attitudes • Developing long-term strategies for success • Peer and media influences on mental health and substance abuse

To Date...

We have served over 5800 youth and
over 300 youth serving professionals via



Quarterly Workshops



Podcast Broadcasts



Digital Materials



Social Media
Engagement
Monthly posts

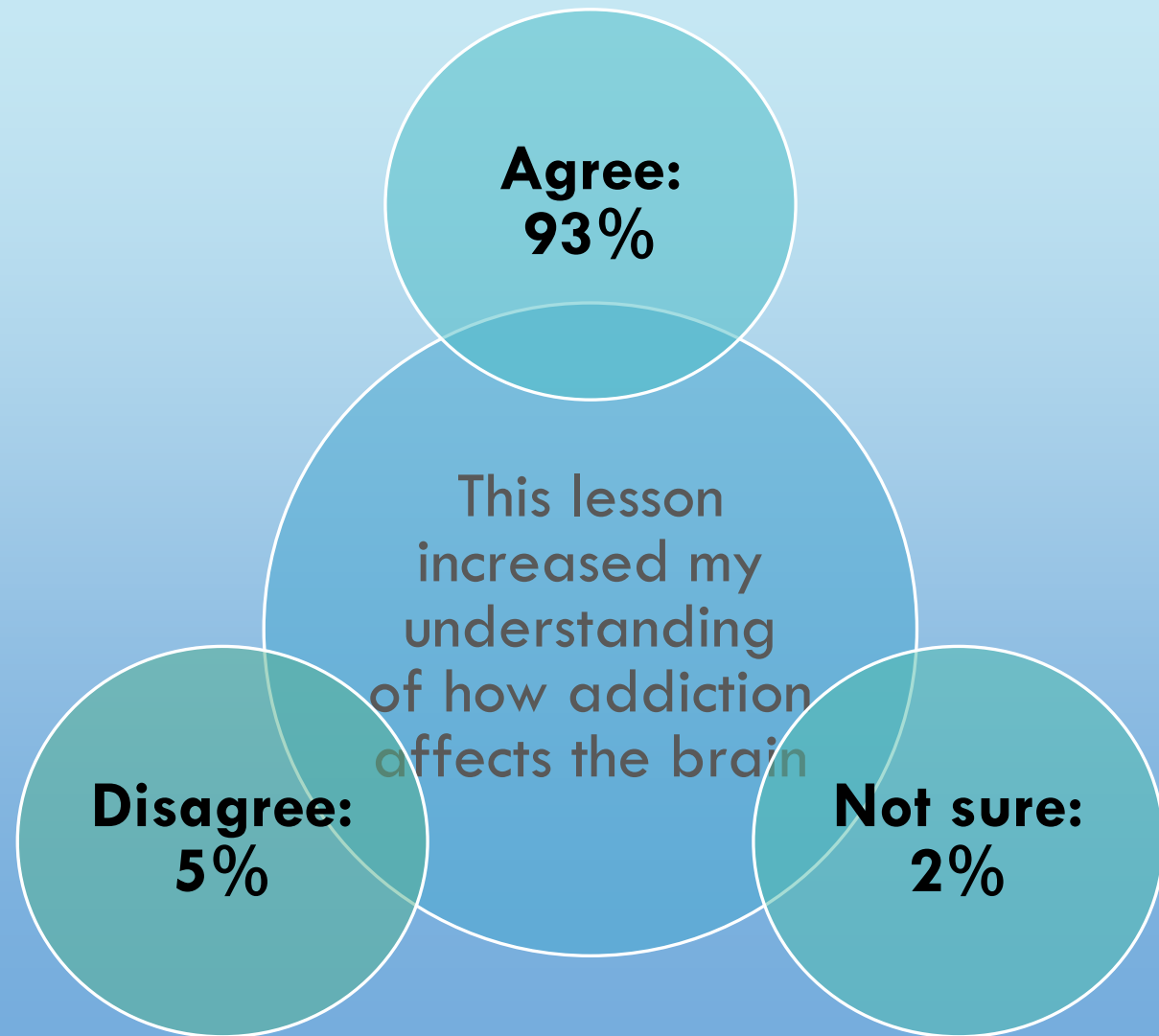
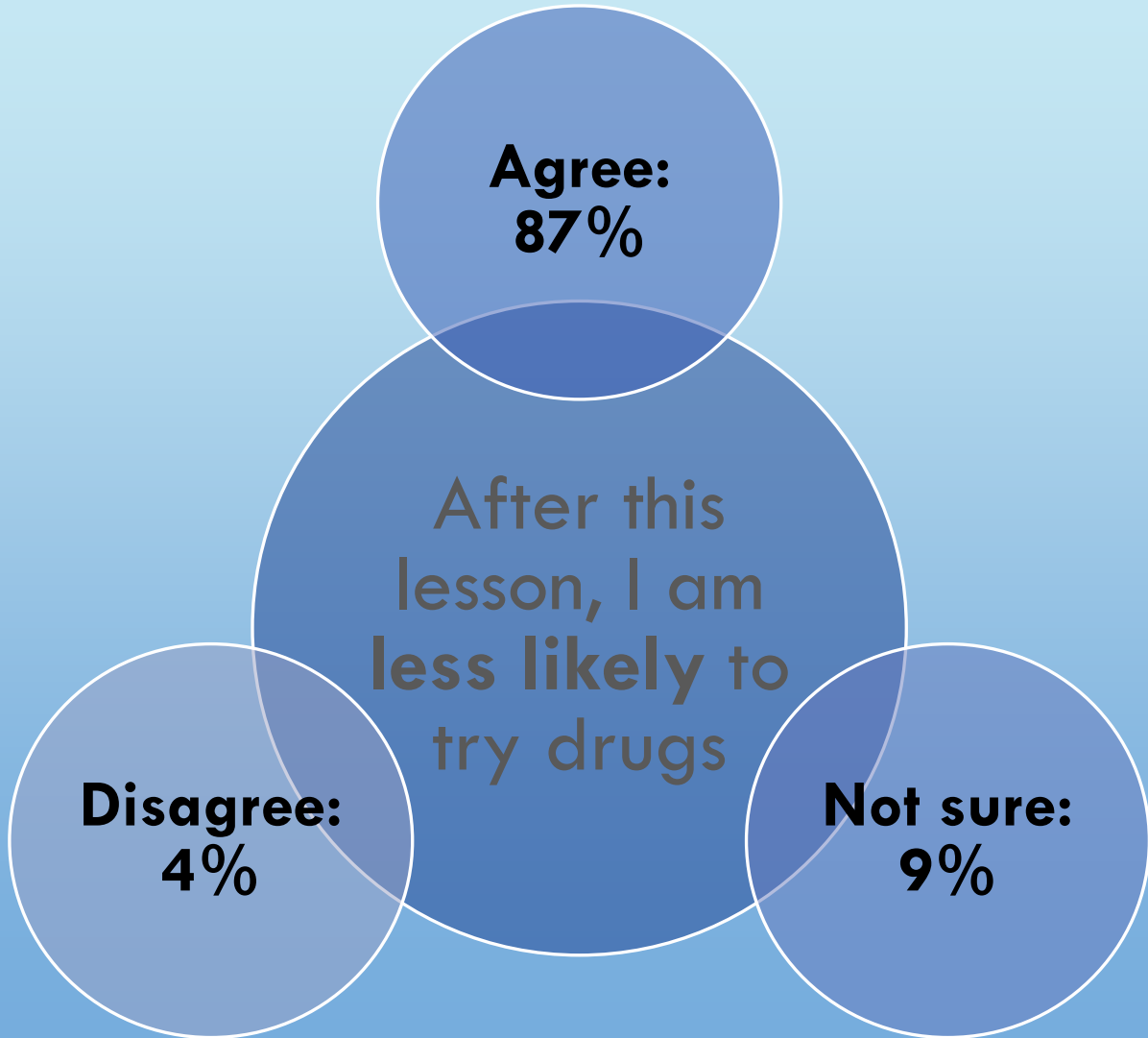


Educational
Interventions



Youth Summit

PERCEIVED IMPACT



Lots of Work to Do... One Step at a Time!

Thanks!

- Julie Jacko, PhD
 - Former Chair of Pop Health @NSU MD
 - Now Distinguished Chaired Professor and co-Director of Center for Health Informatics and Data Sciences at the University of Edinburgh
- Peyton Buettner
 - Project Manager Extraordinaire
- David Nash, MD, MBA
 - Chair of Expert Advisory Board

François Sainfort, PhD, FACHE
fsainfort@nova.edu



Contact
Information